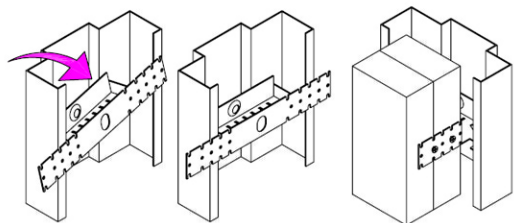
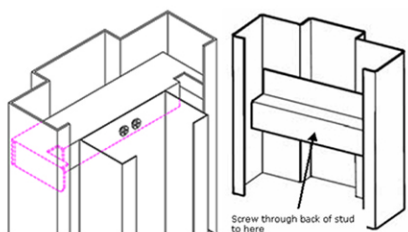


Universal Stud (MP/USA/Etc.)



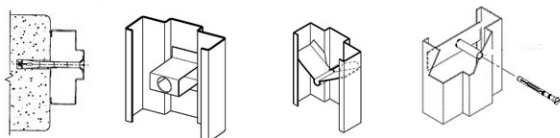
The universal stud anchors that are shown above clip inside the frame and have tabs on each side that bend around and wrap the stud. There are pre-drilled holes so you can screw the tabs to the stud. 6'8" and 7'0" frames are supplied with 6 anchors (3 per jamb) while 8'0" frames will have 8 (4 per jamb).

Steel Stud Anchor



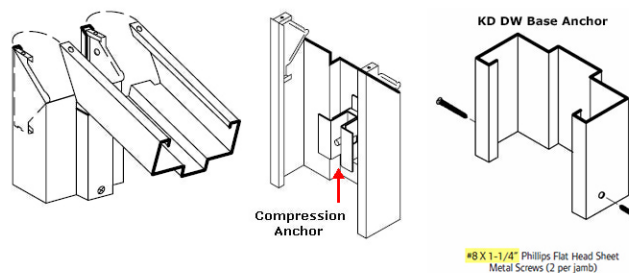
Above left is a loose steel stud anchor. It is installed by screwing into the anchor from the back of the stud before the drywall goes up. On the right is a Z-Clip anchor. This is welded into the back of the frame and secured the same way as the Steel stud anchor.

Existing Opening Anchor



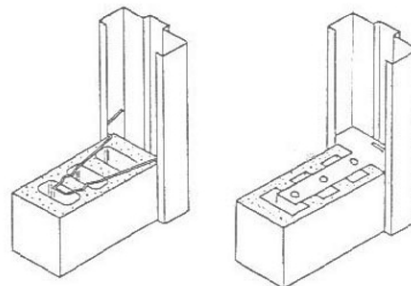
Installing a frame in an existing block wall, requires it to be punch and dimpled (P&D). Using 3 or 4 holes per jamb, 3/8" diameter punched and countersunk in the jambs. The frame is set in the opening, drill through the holes into the block and screw the sleeve anchors in. Some Preps Include anchors (Pipe/EWA) welded in for support to keep the frame from deforming.

Drywall Frame Anchors



To install it slide the head in place over the wall, install the jambs by aligning the tabs in the top of each jamb with the slots in the head and pushing it over the wall. Pull the head down tightly with the jambs and level. Tighten the compression anchors, make sure the frame is square and level. Install sheet metal screws in the bottom holes.

Masonry Anchors



In new block walls, the frame is fastened to the floor with base anchors and either wire masonry anchors or T anchors are used. These are supplied either 6 or 8 to a frame and simply clip into the inside of the frame and are laid in between the courses of block as the wall goes up.

Ph: (713) 462-4551

Fax: (713) 462-3667



4110 Blalock Rd. Houston, TX. 77080